A lush garden at night, illuminated by warm lights. In the foreground, a small fountain features a white cherub statue holding a staff. The garden is filled with greenery, including a large tree with a thick trunk and a path leading through the landscape. The overall atmosphere is serene and elegant.

*The MOST*  
**BEAUTIFUL LIGHTING**  
*in the WORLD*

*John Watson*

LANDSCAPE ILLUMINATION

## INTERNATIONAL HEADQUARTERS

748 S. Sherman St, Ste. 101, Dallas, TX 75081

Toll Free: (800) 886-7751

Website: [www.watsonlighting.com](http://www.watsonlighting.com)

## NATIONWIDE REGIONS

Bay Area, CA • Tulsa, OK • St. Louis, MO • Greenville, SC  
Beverly Hills, CA • Little Rock, AR • Chicago, IL • Atlanta, GA  
Orange County, CA • Houston, TX • Greenwich, CT • Tampa Bay, FL  
Denver, CO • Austin/San Antonio, TX • Long Island, NY • Palm Beach, FL  
Scottsdale, AZ • Kansas City, KS • Raleigh, NC • Miami, FL

## WORLDWIDE REGIONS

Hawaiian Islands • Singapore, Malaysia • Bahamian Islands  
Guam • Tokyo, Japan • Saudi Arabia  
Caribbean • Canada • Hong Kong, China  
Sun City, South Africa • Mexico • Europe



## *A Brief Biography of John Shannon Watson – Landscape Illuminator*

Shannon is recognized worldwide as the leading authority in the field of landscape illumination. Dubbed “Mr. Moonlight” in Time Magazine, his father John, was the pioneer and founder of landscape illumination starting the firm John Watson Landscape Illumination in 1952. Shannon followed in the footsteps of “Mr. Moonlight” for over twenty-three years and has become the heir of their brilliant landscape illumination “design build” company for projects around the world.

As a young man and throughout his high school years, Shannon spent his time away from school learning all the different trades of the company. He began in the warehouse and manufacturing division to learn each integral part of lighting equipment and its proper uses. He then became an installer of the lighting units and chief technician of installations around the United States. Before graduating from high school, he mastered the departments of drafting, accounting and operations. At this time in his life, he realized his true calling to become the next great landscape illumination artist like his father before him.

Shannon attended Westminster College in Fulton, Missouri and graduated with a Bachelor of Arts degree in Business. He and his father agreed that before becoming a great illumination artist, there has to be a strong foundation of business knowledge integrated in your life. During his Summers home from college, he continued to assist in all divisions of the “design build” process of landscape illumination. Also, this was the time he valued most, working hand in hand with his father to learn the true art of landscape illumination design. After college, he immediately began traveling around the world with his father to learn the secrets from the original “master” of landscape illumination design. Their travels took them across the United States, Hawaii, Mexico, the Caribbean, Europe, Africa, China and Japan. Over this time he mastered the art of many different types of landscape gardens and the ability to paint lighting onto a black canvas in all different types of environments.

They both strongly believed he should know every aspect and area of expertise in the field of landscape illumination before setting out on his own. His education and experience gained at such an early age enabled him to become “a master as an artist of light” at the early age of twenty-three. With this well rounded knowledge in landscape architecture, artistry and illumination engineering, there probably will never be another individual to react to the design of light as does Shannon Watson. This alone makes him unique to civilization, as he endeavors to make a more beautiful world at night in which to live and enjoy leisure.

The field of outdoor lighting in which Shannon encompasses into his world, not only includes private gardens and estates, but also grounds for amusement parks, luxury hotels, condominium projects and private country clubs for ever important nighttime appreciation. His extensive background in illumination and electrical expertise, allows the flexibility to create the perfect nighttime ambiance. He utilizes many different types of lighting sources such as high intensity discharge, light emitting diode (LED) and "cutting edge" sophisticated types of illumination depending on where he is creating designs around the world.

His wife, Kelly, is a very active part of his personal and business life. He has two sons, John Madison, 18 and Henry Weatherby, 11 years of age. His mother still resides in Dallas, Texas and his father passed away May 6, 2005 in Beijing, China while creating landscape illumination designs at the prime age of 83.

Shannon is a member of the Phi Delta Theta fraternity Missouri Beta Chapter, Brook Hollow Golf Club in Dallas, Texas and the Dallas Gun Club. His interests include the Dallas Summer Musicals, The Dallas Cowboys, and actively coaching over sixty youth sport's teams. His true love though is the ability to hunt and fish around the world with his two sons. He takes his religion seriously and is an active member and philanthropist of the Lovers Lane United Methodist Church.



TROPICAL ILLUMINATION





RESIDENTIAL ILLUMINATION







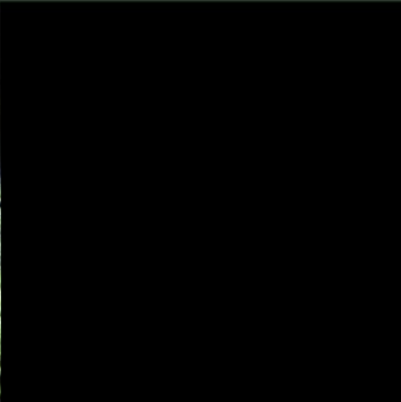
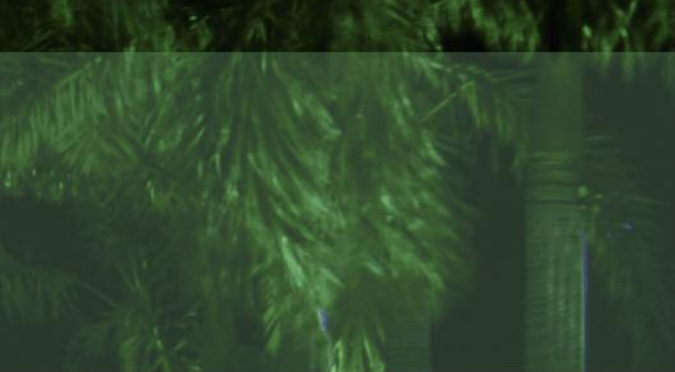
FEATURE ILLUMINATION





MARRIOTT ARUBA  
SURF CLUB





MARRIOTT ARUBA  
SURF CLUB



The Marriott organization asked us to create an illumination system for the entrance to their newest time share project in Aruba. They asked for the lighting units be located in the trees and be as low maintenance as possible. We created this gorgeous system that will last every night, all night for four years before the first lamp would need to be changed out.

## JWLI EQUIPMENT USED

### 7X

175 watt mercury vapor  
downlighting unit with an  
extra long cutoff shield



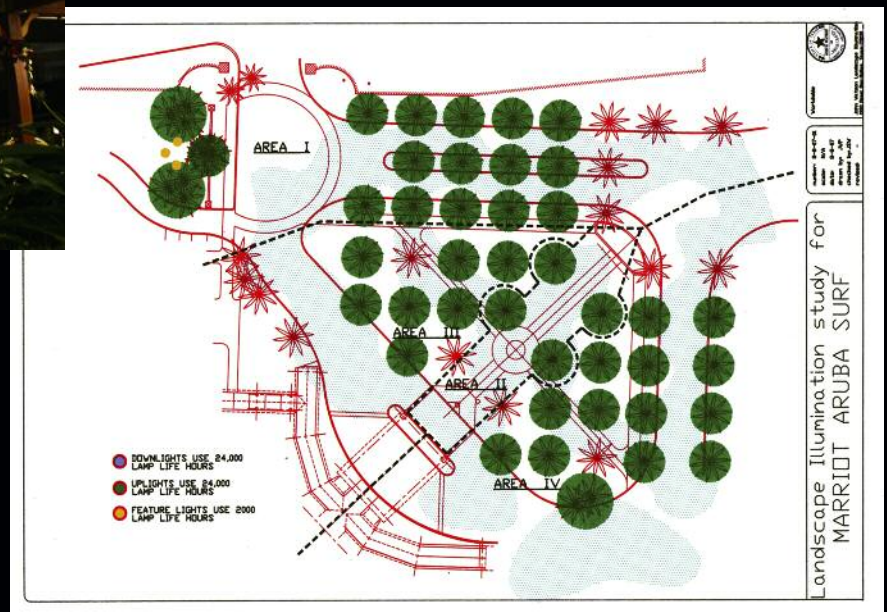
### 7SC

175 watt mercury vapor  
uplight with a short cutoff  
shield



### 13WW

13 watt fluorescent wall  
washer on stake with a short  
cutoff shield



A nighttime photograph of a tropical resort landscape. In the foreground, a curved stone bench surrounds a table where several people are seated. The middle ground features a swimming pool with a concrete deck, illuminated by warm, low-profile ground lights. Tall palm trees are scattered throughout the scene, some with decorative lighting on their trunks. The background shows more of the resort's architecture and landscaping under a dark sky.

J W MARRIOTT IHILANI







The wonderful operations group at the J W Marriott Ihilani came to us with a specific task in mind: increase the aesthetic effects throughout the guest inhabited areas, reduce the energy consumption currently necessary and reduce the ongoing maintenance constantly needed by their existing exterior illumination system. We were happy to surpass their expectations in all three areas. We have maintained the signature John Watson Landscape Illumination effects with twice the system life and 80% less operating cost than what is typically utilized.

## JWLI EQUIPMENT USED

### LED X

13 watt LED downlighting unit with an extra long cutoff shield



### LED C

15 watt LED uplight unit with a short cutoff shield



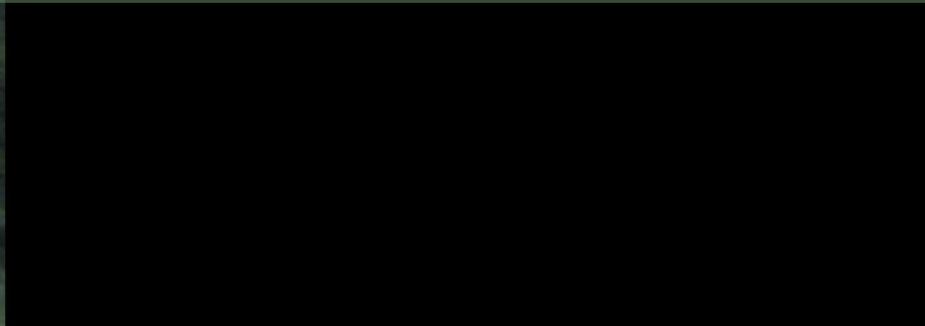
### 75R30

Our custom quartz unit with a hard-glass weatherproof lamp, shield, base and mounting stake





THE CENTER FOR  
BRAIN HEALTH



# THE CENTER FOR BRAIN HEALTH

The nighttime ambiance for the Center for Brain Health was created with a vision that was first centered in security and safety, and second, to create aesthetically pleasing areas for outdoor events in the private gardens. Nighttime brightness levels for all parking and walking areas were very important for patients, visitors and employees. Aesthetically illuminated gardens and social areas enable events such as fundraisers and corporate outside meetings in the gardens to take place at night.



## JWLI EQUIPMENT USED



### 1X

100 watt mercury vapor  
downlighting unit with an  
extra long cutoff shield



### 1SC

100 watt mercury vapor  
uplight with a short cutoff  
shield



### 1R

100 watt mercury vapor  
recessed uplighting unit with  
a walk over grill



### 250

250 watt mercury vapor  
flood uplighting unit with a  
3 inch cutoff shield



### VNSP

100 watt mercury vapor  
recessed uplighting unit with  
a walk over grill



RESIDENTIAL ESTATE







## RESIDENTIAL ESTATE



The soft and subtle nighttime illumination of our residences enables there to be an incredible comfort level of all three aspects of lighting. The “Magic of Moonlight” encompasses the width, length and height of your home, trees and gardens. We aesthetically create our “design-built” process to be safe and secure without the feel of being harsh or “commercial”.

## JWLI EQUIPMENT USED

### 1X

100 watt mercury vapor  
downlighting unit with an  
extra long cutoff shield



### 1SC

100 watt mercury vapor  
uplight with a short cutoff  
shield



### STLNC

100 watt mercury vapor  
uplight unit with a short  
cutoff shield



A nighttime photograph of a landscape. In the foreground, a palm tree is illuminated by a small light source. Behind it, a large, textured rock wall or cliff face is lit up with warm, yellowish light, creating a dramatic effect. The background is dark, with some foliage visible. A bright light source, possibly the moon or a distant light, is visible in the upper right corner.

RAFFLES RESORT

*Private Villa*



# RAFFLES RESORT

*Private Villa*



A private villa owner at the Raffles Resort on Canouan Island contracted us to create an aesthetically pleasing security illumination system for their residence. What is more beautiful than having your own personal moonlighting every night of the week?





ARCHITECTURAL FEATURE ILLUMINATION

UNIT	LAMP TYPE (COLOR)	LAMP WATTAGE	LAMP LIFE HOURS	USAGE	DISTANCE (FEET)
R20SP	Halogen (Warm)	21	5k	Small Feature	15
R20FL	Halogen (Warm)	21	5k	Larger Feature	10
R30SP	Halogen (Warm)	75	3.5k	Small Feature	25
R30FL	Halogen (Warm)	75	3.5k	Larger Feature	20
RSP/RFL	Quartz (Warm)	150	12k	Larger Feature	20
SQFL	Quartz (Warm)	200	2k	Wall or Signage Feature	15
RSP/RFL	Quartz (Warm)	250	4.2k	Larger Feature	30
SQFL BH	Quartz (Warm)	500	2k	Security Flood	50
STLNC	Incandescent (Warm)	25	1k	Small Feature (2'x3')	40
VNSP	Incandescent (Warm)	120	3k	Medium Feature (4'x6')	55
561 SP	Incandescent (Warm)	300	2k	Large Feature (5'x12')	50
561 FL	Incandescent (Warm)	300	2k	Larger Feature (10'x30')	40
13 SL	Fluorescent (Warm/Cool)	13	10k	Wall or Signage Feature	4
26 SL	Fluorescent (Warm/Cool)	26	10k	Wall or Signage Feature	4
32 SL	Fluorescent (Warm/Cool)	32	10k	Wall or Signage Feature	4
64 SL	Fluorescent (Warm/Cool)	64	10k	Wall or Signage Feature	4
DM6	Dimmer	600		Tree or Wall Mounted	30
DM10	Dimmer	1000		Tree or Wall Mounted	30



*STLNC*



*561SP*



*VNSP*



*R30SP*



*R20FL*



DOWNLIGHTING "MOONSHADOW" ILLUMINATION

UNIT	LAMP TYPE (COLOR)	LAMP WATTAGE	LAMP LIFE HOURS	USAGE	DISTANCE (FEET)
MV5	Mercury Vapor (Moonlight)	50	24K	Tree/Eave Mounted	20
MV1	Mercury Vapor (Moonlight)	100	24K	Tree/Eave Mounted	40
MV7	Mercury Vapor (Moonlight)	175	24K	Tree/Eave Mounted	75
MV25	Mercury Vapor (Moonlight)	250	24K	Tree/Eave Mounted	150
MV40	Mercury Vapor (Moonlight)	400	24K	Tree/Eave Mounted	300
MV10	Mercury Vapor (Moonlight)	1000	24K	Tree/Eave Mounted	600
MH5	Metal Halide (Blue-White)	70	16K	Tree/Eave Mounted	20
MH1	Metal Halide (Blue-White)	100	16K	Tree/Eave Mounted	40
MH7	Metal Halide (Blue-White)	175	16K	Tree/Eave Mounted	75
MH25	Metal Halide (Blue-White)	250	16K	Tree/Eave Mounted	150
MH40	Metal Halide (Blue-White)	400	16K	Tree/Eave Mounted	300
MH10	Metal Halide (Blue-White)	1000	16K	Tree/Eave Mounted	600
LED6	LED (Warm/Cool/Moonlight)	6	50K	Tree/Eave Mounted	20
LED13	LED (Warm/Cool/Moonlight)	13	50K	Tree/Eave Mounted	40
LED15	LED (Warm/Cool/Moonlight)	15	50K	Tree/Eave Mounted	60

DOWNLIGHTING "MOONSHADOW" ILLUMINATION



*Mercury Vapor HID*



*Moonlight LED*



*Warm White LED*



*Metal Halide HID*



*Cool White LED*

# UPLIGHTING "AESTHETIC" ILLUMINATION

UNIT	LAMP TYPE (COLOR)	LAMP WATTAGE	LAMP LIFE HOURS	USAGE	DISTANCE (FEET)
MV5	Mercury Vapor (Moonlight)	50	8K	Recessed/Tree/Stake Mounted	20
MV1	Mercury Vapor (Moonlight)	100	24K	Recessed/Tree/Stake Mounted	40
MV7	Mercury Vapor (Moonlight)	175	24K	Recessed/Tree/Stake Mounted	75
MV25	Mercury Vapor (Moonlight)	250	24K	Tree/Stake Mounted	150
MV40	Mercury Vapor (Moonlight)	400	24K	Tree/Stake Mounted	300
MV10	Mercury Vapor (Moonlight)	1000	24K	Tree/Stake Mounted	600
MH5	Metal Halide (Blue-White)	70	16K	Recessed/Tree/Stake Mounted	20
MH1	Metal Halide (Blue-White)	100	16K	Recessed/Tree/Stake Mounted	40
MH7	Metal Halide (Blue-White)	175	16K	Recessed/Tree/Stake Mounted	75
MH25	Metal Halide (Blue-White)	250	16K	Tree/Stake Mounted	150
MH40	Metal Halide (Blue-White)	400	16K	Tree/Stake Mounted	300
MH10	Metal Halide (Blue-White)	1000	16K	Tree/Stake Mounted	600
LED6	LED (Warm/Cool/Moonlight)	6	50K	Recessed/Tree/Stake Mounted	20
LED13	LED (Warm/Cool/Moonlight)	13	50K	Recessed/Tree/Stake Mounted	40
LED15	LED (Warm/Cool/Moonlight)	15	50K	Recessed/Tree/Stake Mounted	60

UPLIGHTING "AESTHETIC" ILLUMINATION



*Mercury Vapor HID*



*Moonlight LED*



*Warm White LED*

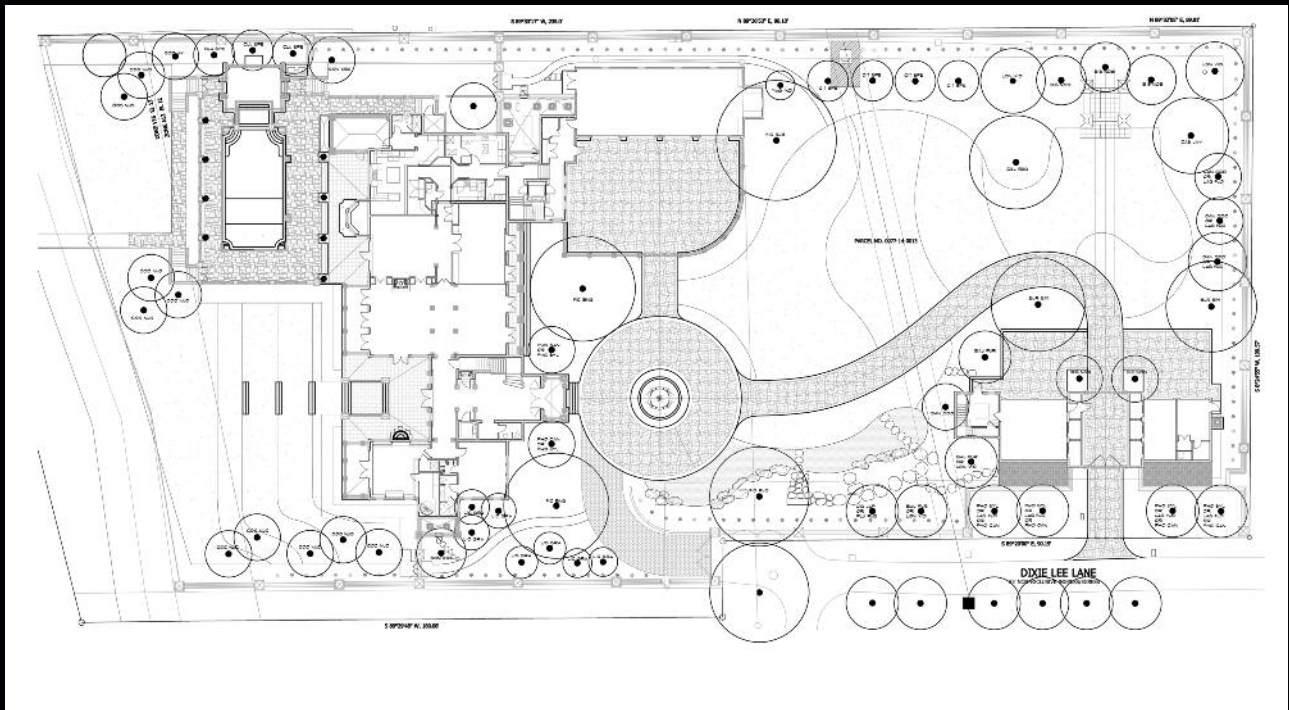


*Metal Halide HID*



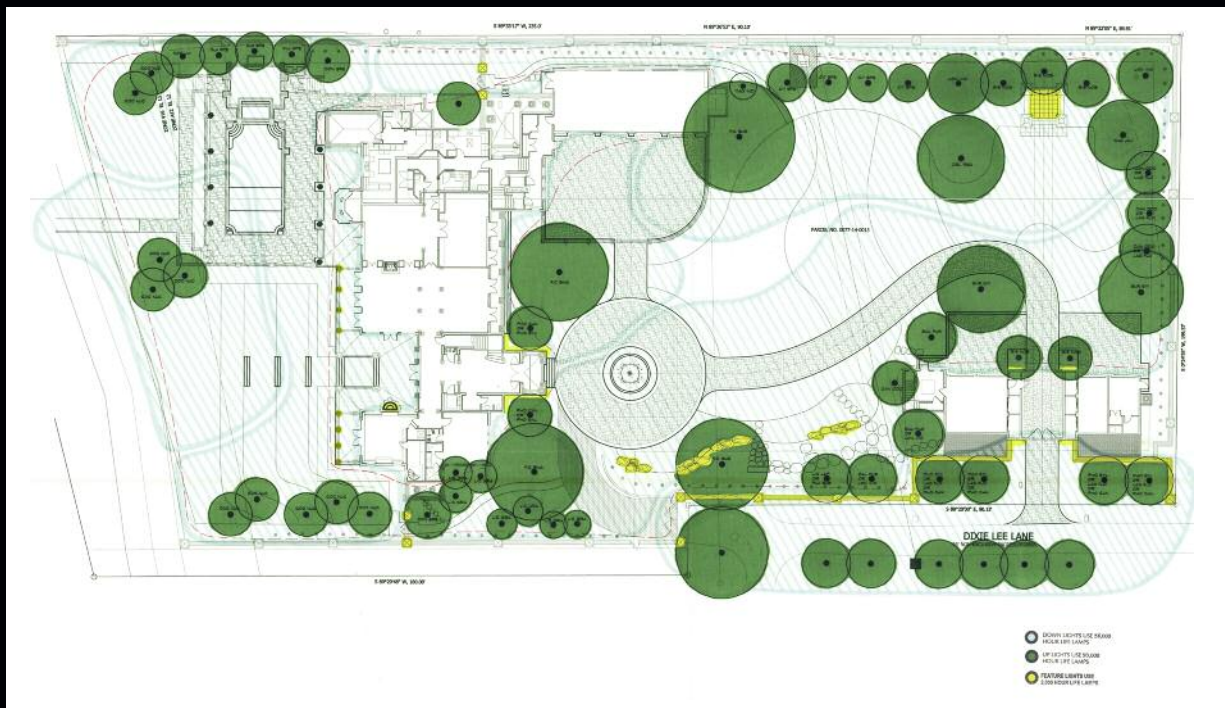
*Cool White LED*

# DESIGN PROCESS



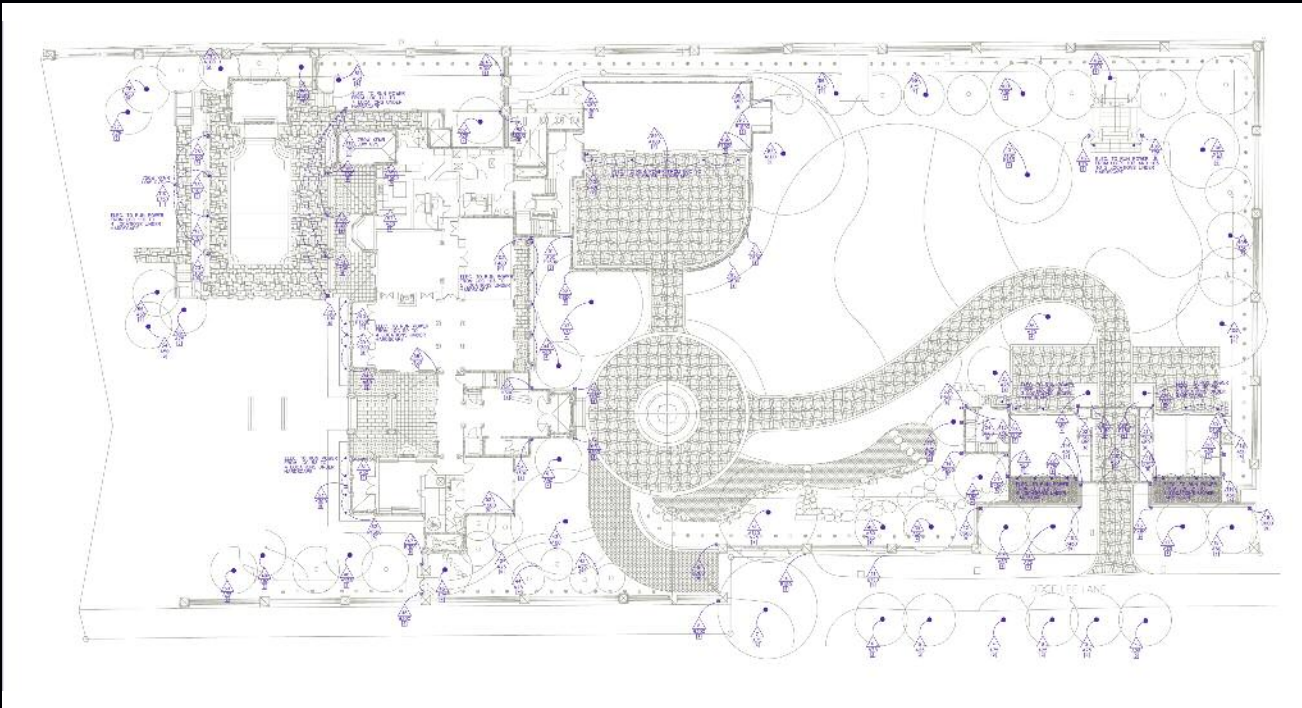
## BACKGROUND PLAN

First, Mr. Watson personally creates your illumination design to cover any and all security, safety and aesthetic concerns to finalize the perfect nighttime ambiance. We can accomplish this by either onsite visits or computer CAD-related landscape architecture plans and photos.



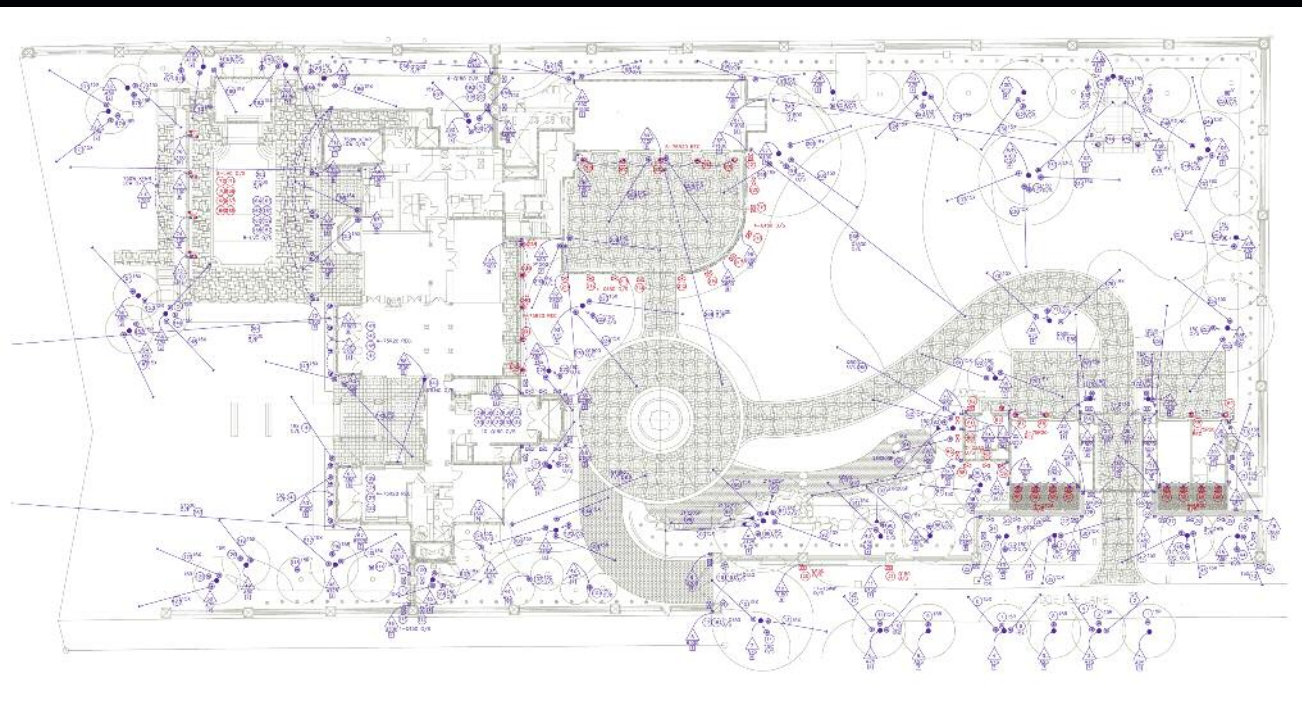
## CONCEPTUAL PLAN

Second, the presentation plan is envisioned and finalized. This colorful layout describes the different types of illumination and the coverage of the lighting effect. This important process validates to our clientele that each area and concern has been addressed.



### ELECTRICAL PLAN

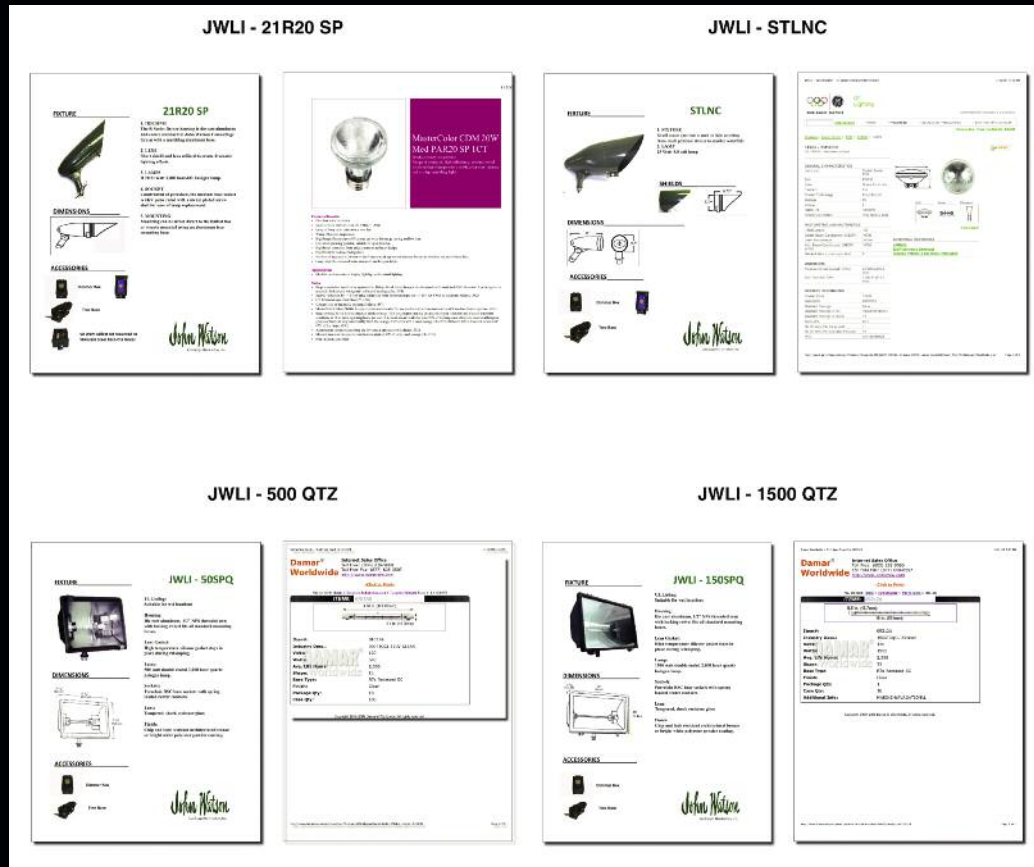
Third, the electrical design plan is established after areas of illumination, budgets and timing have been finalized. This plan discusses all electrical needs ranging from location of power needed to total amperage/wattage for circuitry layout and activation.



### FIXTURE PLAN

Last, the lighting fixture installation plan is developed. All specifications on the equipment to be used, locations of the lighting units in the trees or ground-mounted and installation procedures are covered.

# CONSUMPTION ANALYSIS



## SPECIFIED EQUIPMENT

Each illumination design has specified equipment and quantities necessary. This assists owners and their professionals in finalizing permits and circuitry.

### Residential Example Consumption Analysis

SYSTEM TYPE	QUANTITY OF FIXTURES	LAMP LIFE	TOTAL ELECTRICAL LOAD	ENERGY CONSUMPTION COST PER YEAR	TOTAL SYSTEM BUDGET
MERCURY VAPOR SYSTEM	196	24,000 HOUR	24,500 WATTS	\$29,510.00 / YEAR	\$139,708.00
LED SYSTEM	244	50,000 HOUR	3,660 WATTS	\$4,408 / YEAR	\$174,635.00
ANALYSIS COMPARISON	48 MORE UNITS WITH THE LED SYSTEM	TWICE THE LAMP LIFE WITH THE LED SYSTEM	20,840 LESS WATTS WITH THE LED SYSTEM	\$25,102.00 IN ENERGY SAVINGS EACH YEAR WITH THE LED	\$34,927.00 MORE IN INITIAL INVESTMENT

## CONSUMPTION ANALYSIS

Whenever possible, John Watson Landscape Illumination offers alternative illumination system types. This enables owners to make a more informed choice on the lighting packages based on electrical consumption costs, future maintenance expense and initial investment.

OUR PRESTIGIOUS RESORT  
AND COUNTRY CLUB CLIENTELE





# INTERNATIONAL COMMERCIAL PROJECTS

## COUNTRY CLUBS

### ALABAMA

TUSCALOOSA  
THE YACHT CLUB

### ARIZONA

SCOTTSDALE  
JOHN GARDINIER TENNIS  
RANCH

### ARKANSAS

PINE BLUFF  
PINE BLUFF COUNTRY CLUB

### BAHAMAS

NASSAU  
LYFORD CAY CLUB

### CALIFORNIA

CARLSBAD  
FOUR SEASONS AVIARA CC  
INDIAN WELLS  
ELDORADO COUNTRY CLUB  
LOS ANGELES  
CALIFORNIA YACHT CLUB  
PORTER VALLEY COUNTRY CLUB  
FOUR SEASONS AVIARA CC  
ORANGE COUNTY  
SANTA ANNA COUNTRY CLUB  
PEBBLE BEACH  
PEBBLE BEACH LODGE  
SANTA BARBARA  
BIRNAM WOOD GOLF CLUB

### COLORADO

ASPEN  
THE ASPEN CLUB  
CASTLE ROCK  
CASTLE PINES GOLF CLUB  
CHERRY HILLS VILLAGE  
CHERRY HILLS COUNTRY CLUB  
RED FEATHER LAKE  
FOX ACRES COUNTRY CLUB

### CONNECTICUT

DARIEN  
WEE BURN COUNTRY CLUB  
GREENWICH  
FAIRVIEW COUNTRY CLUB  
GREENWICH COUNTRY CLUB  
ROUND HILL CLUB  
STANWICH CLUB  
WEST HARTFORD  
HARTFORD GOLF CLUB  
WILTON  
ROLLING HILLS COUNTRY CLUB

### FLORIDA

AMELIA ISLAND  
AMELIA ISLAND PLANTATION  
BOCA RATON  
BOCA LAGO  
BOCA POINTE  
BOCA POLO CLUB  
BOCA WEST CLUB  
BROKEN SOUND COUNTRY CLUB  
STONE BRIDGE COUNTRY CLUB

BOYNTON BEACH  
PINETREE COUNTRY CLUB

DELRAY BEACH  
DELRAY BEACH CLUB

ENGLEWOOD  
ENGLEWOOD COUNTRY CLUB

JACKSONVILLE  
EPPING FOREST YACHT CLUB  
PONTE VEDRA COUNTRY CLUB

KEY LARGO  
ANGLER'S CLUB  
CARD SOUND GOLF CLUB  
OCEAN REEF COUNTRY CLUB

MIAMI  
DORAL COUNTRY CLUB  
LA GORCE CLUB  
WILLIAMS ISLAND CLUB

NAPLES  
WYNDEMERE COUNTRY CLUB

NORTH PALM BEACH  
LOST TREE COUNTRY CLUB

ORLANDO  
ISLEWORTH COUNTRY CLUB

PALM BEACH  
EVERGLADES COUNTRY CLUB

PALM BEACH GARDENS  
FRENCHMAN'S CREEK  
COUNTRY CLUB  
IBIS COUNTRY CLUB  
OLD MARSH COUNTRY CLUB  
PGA NATIONAL RESORT

ST. PETERSBURG  
PASADENA YACHT CLUB

STUART  
SAILFISH POINTE COUNTRY CLUB

TAMPA  
SADDLEBROOK  
TAMPA PALMS COUNTRY CLUB

TARPON SPRINGS  
INNISBROOK COUNTRY CLUB

VERO BEACH  
JOHN'S ISLAND CLUB  
MARSH ISLAND CLUB

WEST PALM BEACH  
TRUMP INTERNATIONAL GOLF  
CLUB

### GEORGIA

ATLANTA

ATLANTA NATIONAL GOLF CLUB  
COUNTRY CLUB OF THE SOUTH  
DUNWOODY COUNTRY CLUB  
HORSESHOE BEND COUNTRY CLUB

AUGUSTA  
AUGUSTA NATIONAL GOLF CLUB

SEA ISLAND  
THE CLOISTER

### ILLINOIS

AURORA  
STONEBRIDGE COUNTRY CLUB  
OAK BROOK BATH & TENNIS CLUB

CLARENDON HILLS  
HINSDALE GOLF CLUB

DEERFIELD  
BRIARWOOD COUNTRY CLUB

LAKE BLUFF  
SHOREACRES COUNTRY CLUB

HIGHLAND PARK  
EXMOOR COUNTRY CLUB

LINCOLNSHIRE  
LINCOLNSHIRE BATH &  
TENNIS CLUB

WHEATON  
CANTIGNY GOLF CLUB

### INDIANA

FORT WAYNE  
FORT WAYNE COUNTRY CLUB

### LOUISIANA

SHREVEPORT  
SOUTHERN TRACE

### MICHIGAN

GROSSE POINT  
COUNTRY CLUB OF DETROIT

### NEW JERSEY

ALPINE  
TAMCREST COUNTRY CLUB  
MORRIS TOWNSHIP  
SPRING BROOK COUNTRY CLUB  
SPRINGFIELD  
BALUSROL GOLF CLUB

### NEW YORK

COOPERSTOWN  
THE OTESAGA RESORT HOTEL  
HARRISON  
WILLOW RIDGE  
SOUTHAMPTON  
SHINNECOCK HILLS

### NORTH CAROLINA

BANNER ELK  
DIAMOND CREEK GOLF CLUB  
CAREY  
MACGREGOR DOWNS  
COUNTRY CLUB

*PINEHURST*

PINEHURST COUNTRY CLUB  
PINEHURST NATIONAL GOLF CLUB  
COUNTRY CLUB OF NORTH CAROLINA

*WAYNESVILLE*

COUNTRY CLUB INN

**OHIO**

*PORT CLINTON*

CATAWBA ISLAND CLUB

**OKLAHOMA**

*TULSA*

SOUTHERN HILLS

**SAIPAN**

THE PACIFIC ISLAND CLUB

**TENNESSEE**

*MEMPHIS*

UNIVERSITY CLUB

**TEXAS**

*AUSTIN*

BARTON CREEK CLUB

*BRYAN*

MIRAMONT CLUB

*CORPUS CHRISTI*

CORPUS CHRISTI COUNTRY CLUB

*DALLAS*

BENT TREE COUNTRY CLUB  
BROOKHAVEN COUNTRY CLUB  
BROOK HOLLOW COUNTRY CLUB  
DALLAS COUNTRY CLUB  
NORTHWOOD CLUB  
PRESTONWOOD COUNTRY CLUB  
ROYAL OAKS COUNTRY CLUB

*EL PASO*

EL PASO COUNTRY CLUB

*FORT WORTH*

SHADY OAKS COUNTRY CLUB

*HOUSTON*

BAY OAKS COUNTRY CLUB  
BAYOU CLUB  
DEERWOOD COUNTRY CLUB  
KINGWOOD COUNTRY CLUB  
LAKESIDE COUNTRY CLUB  
RIVER OAKS COUNTRY CLUB  
ROYAL OAKS CLUB

*LAS COLINAS*

LAS COLINAS COUNTRY CLUB

*McALLEN*

McALLEN COUNTRY CLUB

*KERRVILLE*

RIVER HILL COUNTRY CLUB

*LAKE TEXOMA*

TANGLEWOOD ON TEXOMA

*LINDALE*

GARDEN VALLEY GOLF RESORT

*LUBBOCK*

UNIVERSITY CLUB

*MCKINNEY*

STONEBRIDGE COUNTRY CLUB

*SAN ANTONIO*

ARGYLE CLUB  
DOMINION CLUB

FAIR OAKS GOLF & COUNTRY CLUB

*SOUTHLAKE*

TIMARRON COUNTRY CLUB

**VIRGINIA**

*HOT SPRINGS*

HOMESTEAD RESORT

*RICHMOND*

COUNTRY CLUB OF VIRGINIA  
JAMES RIVER CLUB

**HOSPITALITY**

**ARIZONA**

*PARADISE VALLEY*

WYNDHAM HOTEL

*PHOENIX*

ARIZONA BILTMORE  
BOULDERS RESORT

**ARKANSAS**

*LITTLE ROCK*

HILTON INN

**BAHAMAS**

*BIMINI*

BIMINI YACHT CLUB

*NASSAU*

ATLANTIS  
CAFÉ MARTINIQUE  
LE MERIDIEN ROYAL HOTEL  
NASSAU BEACH HOTEL  
LYFORD CAY CLUB

**CALIFORNIA**

*BEVERLY HILLS*

FOUR SEASONS  
L'ERMITAGE  
PENINSULA HOTEL

*BURBANK*

GRACIELA HOTEL

*CARLSBAD*

FOUR SEASON AVIARA

*ESCONDIDO*

GOLDEN DOOR SPA

*LOS ANGELES*

BEVERLY GARLAND HOTEL  
HOTEL BEL AIR

*RANCHO SANTA FE*

INN AT RANCHO SANTA FE

*RIVERSIDE*

THE MISSION INN

*SANTA BARBARA*

FOUR SEASONS BILTMORE

*SANTA MONICA*

CASA DEL MAR  
SHUTTERS ON THE BEACH

**CARIBBEAN**

*ARUBA*

MARRIOTT ARUBA SURF CLUB

*CANOUAN ISLAND*

RAFFLES RESORT

*DOMINICAN REPUBLIC*

JACK TAR CASINO

*JAMAICA*

HALF MOON BAY CLUB

*PUERTO RICO*

CARIBE HILTON  
PRATT'S SANDS HOTEL

*ST. LUCIA*

SANDALS

*ST. THOMAS*

STOUFFER'S GRAND BEACH HOTEL

*VIRGIN GORDA, W.I.*

ROSEWOOD LITTLE DIX

*CYPRESS*

THANOS HOTEL

**FLORIDA**

*AMELIA ISLAND*

AMELIA ISLAND INN  
AMELIA ISLAND PLANTATION

*BAL HARBOUR*

SHERATON RESORT

*CLEAR WATER*

COUNTRYSIDE PLACE

*CORAL GABLES*

COLONNADE HOTEL

*FT. LAUDERDALE*

LAGO MAR RESORT  
PALM AIRE RESORT & SPA  
RENAISSANCE HOTEL  
RIVERSIDE HOTEL  
SHERATON RESORT

*KEY LARGO*

OCEAN REEF GALLEY RESTAURANT  
OCEAN REEF HOTEL & INN

*MIAMI*

FOUNTAINBLEAU RESORT  
DON SHULA HOTEL

*NAPLES*

CHARTER CLUB / MARCO ISLAND  
EDGEWATER RESORT

# INTERNATIONAL COMMERCIAL PROJECTS

PARK SHORE RESORT  
ORLANDO  
RADISSON CELEBRATION

PALM BEACH  
CHESTERFIELD DELUXE  
PARC REGENT

PALM HARBOUR  
INNISBROOK HILTON RESORT

PENSACOLA  
PALM AIRE HOTEL & SPA  
POMPANO

ST. AUGUSTINE  
RINGHAVER HUNTING LODGE

TAMPA  
HYATT BAYPORT REGENCY

## GEORGIA

PINE MOUNTAIN  
CALLAWAY GARDENS INN  
SEA ISLAND  
CLOISTERS

## HAWAII

BIG ISLAND  
MAUNA KEA BEACH HOTEL  
HILTON WAIKOLOAN VILLIAGE  
KONA FOUR SEASONS

OAHU  
HILTON HAWAIIAN VILLAGE  
HOTEL NIKKO WAIKIKI  
ILIKAI  
MARRIOTT IHILANI  
OUTRIGGER HOBRON

KUAUI  
KUAUI MARRIOTT

MAUI  
GRAND WAILEAI RESORT  
MARRIOTT OCEAN CLUB  
MAUI MARRIOTT

## ILLINOIS

LINCOLNSHIRE  
MARRIOTT LINCOLNSHIRE  
RESORT

## JAPAN

TOKYO  
FOUR SEASONS HOTEL

## MALAYSIA

PENANG  
SHANGRA-LA RASA SAYANG

## MEXICO

ACAPULCO  
FAIRMONT HERITAGE CLUB  
FAIRMONT PRINCESS  
FAIRMONT PIERRE MARQUEZ

MEXICO CITY  
FOUR SEASONS MEXICO CITY

PLAYA DEL CARMEN  
MAYAKOBA RESORT  
FAIRMONT MAYAKOBA  
PUERTO VALLARTA  
FOUR SEASONS PUNTA MITA

## MISSOURI

BRANSON  
ANDY WILLIAMS MOON RIVER  
THEATRE

## NORTH CAROLINA

CHARLOTTE  
WYNDHAM HOTEL

## SINGAPORE

FOUR SEASONS HOTEL  
FOUR SEASONS CONDOS  
SHANGRI-LA SINGAPORE  
SHANGRI-LA RASA SENTOSA  
ALKAFF MANSION

## SOUTH AFRICA

THE LOST PALACE AT SUN CITY

## SOUTH CAROLINA

AIKEN  
WOODSIDE PLANTATION  
MYRTLE BEACH  
THE BREAKERS

## TEXAS

AUSTIN  
FOUR SEASONS HOTEL  
RENAISSANCE HOTEL  
WYNDHAM HOTEL  
DALLAS  
EMBASSY SUITES  
JAVIER'S RESTAURANT  
THE MANSION ON TURTLE CREEK  
PLAZA OF THE AMERICAS  
THE CRESCENT

HOUSTON  
FOUR SEASONS  
HILTON AMERICAS  
HOUSTONIAN  
RITZ-CARLTON HOTEL  
WESTIN GALLERIA HOTEL

KINGSVILLE  
THE KING RANCH

LAS COLINAS  
FOUR SEASONS HOTEL  
MARRIOTT MANDALAY

LEAKEY  
LAITY LODGE

MCALLEN  
EMBASSY SUITES

NEW BRAUNFELS  
TREE TOPS

SAN ANTONIO

FAIRMONT HOTEL  
HOTEL PLAZA NATIONAL

## VIRGINIA

HOT SPRINGS  
THE HOMESTEAD

## BAHAMAS

CROWN BAHAMAS  
LYFORD CAY SHOPPING CENTER  
PORT NEW PROVIDENCE

## CALIFORNIA

CLEARLAKE  
BRASSFIELD WINERY

CENTURY CITY  
CENTURY TOWERS

NAPA  
FAR NIENTE WINERY  
NICKEL & NICKEL WINERY

PALM SPRINGS  
MORNINGSIDE

## FLORIDA

BOCA RATON  
BOCA VILLAGE TOWER  
CLEARWATER  
COACHMAN RIDGE CONDOS

FORT LAUDERDALE  
PARC VILLAGE

JACKSONVILLE  
EPPING FOREST

JOHN'S ISLAND  
OCEANSIDE VILLAGE

LAGO MAR  
ISLAND OF JUPITER

MIAMI  
COSCAN'S WATERWAYS  
DEERING BAY

NAPLES  
COUNTRYSIDE

NORTH MIAMI  
THE JOCKEY CLUB  
THE WATERWAYS  
WILLIAMS ISLAND

OSPREY  
THE OAKS PRESERVE

PALM HARBOR  
LANDSBROOK DEVELOPMENT

PALM BEACH GARDENS  
IBIS LAKES  
PGA GOLF RESORT  
PGA NATIONAL

VERO BEACH  
LITTLE HARBOR GEM ISLAND  
MORNINGS HARBOR

SARASOTA  
OAKS

TIMBERWOODS  
TAMPA  
AVILA  
TARPON SPRINGS  
INNISBROOK

### GEORGIA

ATLANTA  
BARCLAY  
DUNWOODY CHASE  
FAIRINGTON DEVELOPMENT  
NEELY FARM

### HAWAII

HONOLULU  
ROYAL HAWAIIAN SHOPPING  
CENTER

### ILLINOIS

ARLINGTON HEIGHTS  
THE MOORINGS  
HIGHLAND PARK  
HYBERNIA  
LAKE BLUFF  
HARRISON CONFERENCE CENTER

### MEXICO

PLAYA DEL CARMEN  
OHL DEVELOPMENT

### OHIO

CINCINNATI  
EVERGREEN

## DEVELOPMENTS / APARTMENTS

### ARKANSAS

LITTLE ROCK  
MIDTOWN SHOPPING CENTER  
GOVERNOR'S MANSION

### OKLAHOMA

TULSA  
EIGHT ACRES DEVELOPMENT  
SIGNAL HILL ENTRANCE

### NEVADA

HENDERSON  
DEL WEBB SUN CITY PARKWAY  
DEL WEBB ANTHEM PARKWAY

### SINGAPORE

FOUR SEASONS CONDOS

### SOUTH CAROLINA

BEAUFORT  
DATAW ISLAND  
BLUFFTON  
DEL WEBB SUN CITY  
HILTON HEAD

DEL WEBB SUN CITY RIVER BEND  
DAUFUSKIE ISLAND  
HAIG POINT  
GREENVILLE  
RBC LIBERTY BUSINESS CENTER

### TEXAS

AUSTIN  
ARBORETUM  
GOVERNOR'S MANSION  
HILL COUNTRY GALLERIA  
SUNNYVALE VILLA  
WOODSTONE SQUARE  
CONROE  
APRIL SOUND  
DALLAS  
ARBORETUM  
ATHENA CONDOS  
COCHRAN CHAPEL TOWN HOMES  
GLEN LAKES  
HIGHLANDS OF KESSLER PARK  
LAKES OF BENT TREE

HOUSTON  
ARBORETUM  
HOUSTON CENTER URBAN  
GARDENS  
HOUSTONIAN ESTATES  
HUDSON ON MEMORIAL  
KINGWOOD  
OAKS OF WOODLAKE PHASE  
THREE  
PIN OAK VILLAGE  
RIVEROAKS  
RIVEROAKS TOWN HOMES  
WATERWOOD  
WOODLANDS  
WOODSTONE III

KATY  
FALCON POINT  
KERRVILLE  
GUADALUPE CONDOS  
LEAGUE CITY  
SOUTH SHORE HARBOUR

MCKINNEY  
STONEBRIDGE RANCH  
SAN ANTONIO  
DOMINION  
EAGLE'S NEST  
LEGACY SHOPPING MALL

WACO  
BRAZOS PARK

### WASHINGTON D.C.

VICE PRESIDENT'S RESIDENCE

### WISCONSIN

MILWAUKEE  
OAKS OF GREENFIELD

## PARKS (PUBLIC & AMUSEMENT)

### ARIZONA

TUCSON  
TRAIL DUST TOWN

### CANADA

BRITISH COLUMBIA  
QUEEN VICTORIA PARK

### FLORIDA

JUPITER  
LIGHTHOUSE

TAMPA  
BUSCH GARDENS

### GEORGIA

ATLANTA  
SIX FLAGS OVER GEORGIA

### MISSOURI

ST. LOUIS  
SIX FLAGS OVER MID-AMERICA

### NORTH CAROLINA

ADVANCE, GASTONIA,  
GREENSBORO  
PUTT-PUTT GOLF & GAMES

### OKLAHOMA

TULSA  
PHILBROOK MUSEUM  
GILCREASE MUSEUM

### SOUTH CAROLINA

GREENVILLE  
THE PEACE CENTER

### TEXAS

ARLINGTON  
SIX FLAGS OVER TEXAS

AUSTIN  
LADY BIRD JOHNSON  
WILDFLOWER CT.

DALLAS  
LEE PARK  
PUTT-PUTT GOLF & GAMES

FORT WORTH  
JAPANESE GARDENS  
HALL / BOTANICAL GARDENS

GALVESTON  
MOODY GARDENS

HIGHLAND PARK  
ARMSTRONG PARKWAY  
CURTIS PARK

FLIPPEN PARK  
HACKBERRY CREEK  
HIGHLAND PARK SHOPPING  
CENTER

# INTERNATIONAL COMMERCIAL PROJECTS

LAKESIDE DRIVE  
NEW BRAUNFELS  
CITY SQUARE PLAZA  
SAN ANTONIO  
HEMISFAIR  
RIVERWALK

## RELIGIOUS CENTERS

### BAHAMAS

NASSAU  
HOLY TRINITY CHURCH

### DISTRICT OF COLUMBIA

WASHINGTON HEBREW  
CONGREGATION

### FLORIDA

BOCA RATON  
CONGREGATION B'NAI ISRAEL  
FIRST CHRISTIAN CHURCH

### TEXAS

DALLAS  
DALLAS THEOLOGICAL SEMINARY  
HIGHLAND PARK METHODIST  
CHURCH  
JEWISH COMMUNITY CENTER  
LOVER'S LANE UMC  
ST. JOHN THE APOSTLE CHURCH  
ST. MICHAEL'S & ALL ANGELS  
CHURCH

HOUSTON  
ST. ANDREW'S EPISCOPAL CHURCH  
ST. MARTIN'S EPISCOPAL CHURCH  
ST. PAUL'S EPISCOPAL CHURCH  
TRINITY EPISCOPAL CHURCH

KINGWOOD  
KINGWOOD FIRST BAPTIST  
CHURCH

NEW BRAUNFELS  
FIRST METHODIST CHURCH  
FIRST PROTESTANT CHURCH

SAN ANTONIO  
BIBLE STUDY FELLOWSHIP  
CHRIST EPISCOPAL CHURCH  
CONCORDIA LUTHERAN CHURCH

TERRELL  
ST. JOHN'S CATHOLIC CHURCH

## SCHOOLS

### ALABAMA

AUBURN  
AUBURN UNIVERSITY

### CALIFORNIA

MALIBU  
PEPPERDINE UNIVERSITY

### ILLINOIS

CHICAGO CITY DAY SCHOOL

### MISSISSIPPI

HATTIESBURG  
UNIV. OF SO. MISSISSIPPI,  
PRES. HOME

### NEW YORK

ITHACA  
CORNELL UNIVERSITY  
NEW YORK CITY  
ROCKEFELLER UNIVERSITY

### TEXAS

AUSTIN  
UNIVERSITY OF TEXAS  
COLLEGE STATION  
TEXAS A&M UNIVERSITY  
DALLAS  
EPISCOPAL SCHOOL OF DALLAS  
HOCKADAY SCHOOL  
SOUTHERN METHODIST  
UNIVERSITY  
FORT WORTH  
TEXAS CHRISTIAN UNIVERSITY  
GEORGETOWN  
SOUTHWESTERN UNIVERSITY  
HOUSTON  
RICE UNIVERSITY  
SAN ANTONIO  
TRINITY UNIVERSITY

## HOSPITALS

### CALIFORNIA

PALM SPRINGS  
PALM SPRINGS HOSPITAL

### LOUISIANA

BATON ROUGE  
FAMILY MEDICAL CENTER

### TEXAS

ARLINGTON  
COMMUNITY HOSPITAL  
DALLAS  
CHILDREN'S HOSPITAL  
METHODIST HOSPITAL  
PRESBYTERIAN HOSPITAL  
SCOTTISH RITE HOSPITAL  
WOODHILL MEDICAL CENTER  
FORT WORTH  
CHILDREN'S MEDICAL CENTER

## NATIONAL HEADQUARTERS

### ALABAMA

BIRMINGHAM  
HERBERT CONSTRUCTION  
MONTGOMERY  
BLOUNT CONSTRUCTION  
TUSCALOOSA  
GULF STATES PAPER

### NEW YORK

PURCHASE  
PEPSICO, INC.

### TEXAS

CONROE  
BETZ CHEMICAL  
DALLAS  
EDS  
MARY KAY COSMETICS  
SOUTHLAND CORP.  
SOUTHWESTERN LIFE  
HOUSTON  
AMERICAN PRODUCTIVITY  
CENTER  
KERRVILLE  
L.D. BRINKMAN  
WOODLANDS  
WOODLANDS CONFERENCE  
CENTER

## OFFICE BUILDINGS

### BAHAMAS

NASSAU  
CROWN BAHAMAS

### CALIFORNIA

CENTURY CITY  
CENTURY TOWERS  
WEST HOLLYWOOD  
SUNSET TOWERS

### FLORIDA

BOCA RATON  
BOCA RIO CENTER  
CRYSTAL CORPORATE CENTER  
ONE BOCA PLACE  
ONE LINCOLN PLACE  
CORAL GABLES  
MYSTIC POINT  
FORT LAUDERDALE  
CYPRESS CENTRE  
FT. LAUDERDALE NATIONAL BANK  
JACKSONVILLE  
KROGER EXECUTIVE BUILDING  
MIAMI  
BARNETT TOWER  
NORTH PALM BEACH  
GOLDEN BEAR PLAZA  
TAMPA

HAMPTON OAKS  
ONE METRO CENTER  
WESTSHORE CENTER  
VERO BEACH  
INDIAN RIVER SHORES  
WEST PALM BEACH  
DIVOSTA BUILDING

### GEORGIA

ATLANTA  
NORTHWOODS  
PEACHTREE RIDGE

### ILLINOIS

MCGAW PARK  
BAXTER HEALTHCARE  
ST. CHARLES  
ARTHUR ANDERSEN & CO.

WHEELING  
ORVAL KENT FOODS

### TEXAS

ABILENE  
FIRST STATE BANK  
ARLINGTON  
WOODLAND  
AUSTIN  
ONE BARTON OAKS  
TARRYTOWN SHOPPING CENTER  
BOERNE  
FIRST NATIONAL BANK OF BOERNE  
DALLAS  
FOREST PLAZA  
RAMBLER ROAD, 7557  
SIGNATURE PLACE  
STEMMONS CENTER  
FORT WORTH  
TEXAS/SOUTHWESTERN  
CATTLE RAISER ASSOC.  
HOUSTON  
PRESIDIO  
VALCO INSTRUMENTS  
WOODSTONE  
KERRVILLE  
CHARLES SCHRIENER BANK  
REFUGIO  
LAMBERT PLAZA  
SAN ANTONIO  
KSAT TELEVISION  
RENAISSANCE PLAZA  
WAXAHACHIE  
CITIZEN'S BANK

## MISCELLANEOUS

### AFRICA

KENYA

WILDENSTEIN COMPLEX

### ALABAMA

FAIRHOPE  
SHADOWWOOD

### BAHAMAS

NASSAU  
GOVERNMENT HOUSE  
RAWSON SQUARE  
U.S. EMBASSY  
SAUDI ARABIA  
ROYAL FAMILY RESIDENCE

## CELEBRITIES

### CALIFORNIA

BEL AIR  
JOANNA CARSON  
MAC DAVIS  
JERRY PERENCHIO  
RONALD & NANCY REAGAN  
TERRY SEMEL  
BEVERLY HILLS  
DAVID GEFLEN  
JEFFREY KATZENBERG  
RUPERT MURDOCH  
RAY STARK  
BURT SUGARMAN  
IRWIN WINKLER  
BRENTWOOD  
PHYLLIS DILLER  
HOLMBY HILLS  
BETSY BLOOMINGDALE  
HUGH HEFNER  
MALIBU  
MARCEY CARSEY  
JANE FONDA  
CARROL O'CONNOR  
KENNY ROGERS  
PACIFIC PALISADES  
ARNOLD SCHWARZENEGGER  
SANTA BARBARA / MONTECITO  
ANGELO MOZILO  
PAUL (KINKOS) ORFALEA  
HERB SIMON  
ED SNIDER  
WEST HOLLYWOOD  
MADONNA

### COLORADO

VAIL  
HENRY KRAVIS

### CONNECTICUT

GREENWICH  
WILLIAM PETER BLATTY  
HENRY KRAVIS

DIANA ROSS  
DONALD TRUMP  
NEW CANAAN  
DAVID LETTERMAN  
SOUTHPORT  
ALBERT HADLEY

### FLORIDA

JUPITER  
BURT REYNOLDS  
FT. LAUDERDALE  
WAYNE HUIZENGA  
KEY BISCAYNE  
CHER

### GEORGIA

ATLANTA  
LARRY DEAN  
RANKIN SMITH

### TENNESSEE

MEMPHIS  
CHARLIE RICH  
NASHVILLE  
BARBARA MANDRELL

### TEXAS

AUSTIN  
LANCE ARMSTRONG  
SANDRA BULLOCK  
WILLIE NELSON  
DALLAS  
DEDMAN FAMILY  
JERRY JONES  
TOM LANDRY  
HAROLD SIMMONS  
ROGER STAUBACH  
FORT WORTH  
BASS FAMILY  
VAN CLIBURN  
HOUSTON  
ROGER CLEMENS  
RALPH SAMPSON  
DOUG SANDERS  
PITTSBURG  
LONNIE "BO" PILGRIM  
SAN ANTONIO  
TOMMY LEE JONES  
DAVID ROBINSON  
DENNIS RODMAN  
FRANK SITTERLE  
GEORGE STRAIT

## TESTIMONIALS

“We just love our new lighting!!!!...not only do we feel much safer, but it has extended our living space”!

– *Sally Fryer, Dallas, TX*

“It is not just my nighttime ambiance, but my entire life is better. It is also very comforting that my furry child has the security of JWLI to protect him from coyotes. Thanks for the honor of being included in the catalog”.

– *Cinde Drilling, Little Rock, AR*

"At night hotel gardens take on a completely different ambience that only JWLI knows how to interpret and romanticize. There is no better guest experience than walking through a magical moon lit garden that JWLI designed. There is no equal to JWLI commitment to excellence and attention to detail".

– *George Lagusis, Fairmont Raffles Hotels, San Francisco, CA*

“JWLI provides the perfect nighttime setting for our home. Security, while creating the intimate feel of a soft-lit evening under a harvest moon”.

– *Fred Lord, Little Rock, AR*

"When we decided to enhance our property with landscape lighting, we chose to work with John Watson and have been extremely pleased with the results. Their expert design reflected both the majesty of our trees and the natural, moonlight shadowing we so desired. As we implemented our plan over several stages, they worked closely with us, especially in the final stage to set each light to the exact right angle. Our experience in working with JWLI can only be described as professional, creative, hardworking, and responsive, and we couldn't be more satisfied with the moonlit ambience they have created for our home."

– *The Glossers, Dallas, TX*

“Absolutely the best illumination design available”.

– *Peter Walter, Tulsa, OK*

“A unique blend of experienced outdoor lighting expertise, an absolute customer focused staff and imaginative approaches and solutions to lighting challenges are at the heart of John Watson Landscape Illumination (JWLI). This group of passionate doers is satisfied only when their clients are happy, when they know they have created superb and special lighting memorable moments for you, your family and your friends”.

– *Hayne Hipp, Greenville, SC*

“Your consistent professionalism, quality, and outstanding follow-up make you the only lighting provider I recommend to my clients. I am always confident that you will deliver a product that is technically sound, a beautiful asset to the property and fulfills the client's dream of magical nighttime garden. Be assured that we plan to continue our relationship far into the future”.

– *Sue Blaydes, Dallas, TX*





A nighttime photograph of several tall palm trees. The trunks and fronds are illuminated from below with a vibrant green light, creating a dramatic silhouette effect against the dark sky. The lighting highlights the texture of the tree trunks and the intricate patterns of the fronds.

748 S. Sherman St, Ste. 101, Dallas, TX 75081

Toll Free: (800) 886-7751

Website: [www.watsonlighting.com](http://www.watsonlighting.com)

The logo for John Watson Landscape Illumination. It features a white silhouette of a man wearing a top hat and a long coat, standing next to a decorative wrought-iron post. To the right of the silhouette, the name "John Watson" is written in a large, elegant, white cursive script.

John Watson

LANDSCAPE ILLUMINATION